

# Green Pulse

A Publication from **Green In Future Pte Ltd**, Singapore

Volume 7 Issue 27 • 2023 • [www.greeninfuture.com](http://www.greeninfuture.com)



**KEPPEL SOUTH CENTRAL - A HIGHLY  
SUSTAINABLE NEXT GENERATION TOWER**



# INSIDE

GreenPulse

VOLUME: 7

ISSUE: 27

3

## COVER STORY



NBJJ unveil  
design for  
Keppel  
South  
Central

11

## TECH FEATURE

Lessons from Japan's  
thriving Agricultural  
industry

7

## FACE TO FACE



Interview  
with  
Andrew  
Chew

16

## NEWS

RSP Architects receives  
the President's Design  
Award for the sixth  
time for CapitaSpring

### Credits:

Editor: [editor@greeninfuture.com](mailto:editor@greeninfuture.com)

Marketing: [marketing@greeninfuture.com](mailto:marketing@greeninfuture.com)

Business Development: [info@greeninfuture.com](mailto:info@greeninfuture.com)

Design and Production: Nandini Subramanian

# NBBJ Architects unveils design for Keppel South Central, a Highly Sustainable Next Generation commercial tower in Singapore

Landmark Tropical Tower sets new standards for integrating nature, sustainability and sense of community in next-generation office and commercial tower



NBBJ – an ideas-driven architecture and design firm dedicated to creating communities, healthy buildings, and resilient environments, has released design details behind Keppel South Central, a collaborative effort with Keppel that will transform the original Keppel Towers site into a 33-storey commercial tower with industry-leading energy efficiency and community centric urban design. Featuring a mix of traditional office floors, flexible workspaces, health and wellbeing facilities, an outdoor pool, and public amenities such as retail spaces, cafes, and a rooftop restaurant and bar, the project broke ground in 2021 and is slated for completion in Q4 2024.

Driving the Keppel South Central development is a vision to create a unique landmark that will represent the aspirations of Keppel to shape a changing neighbourhood and give Singapore one of its most sustainable office building developments to date.

“We are honored to collaborate with Keppel on the redevelopment of Keppel Towers to achieve their high reaching goals for environmental excellence and sustainable building practices, and to unveil a design that showcases innovative social programming and sophisticated integration with nature

supporting the next generation workplace,” said Timothy Johnson FAIA, Partner at NBBJ. “Embracing the future of the built environment with sustainable design and incorporating a large public plaza as the social heart of the project, we aim to add vibrancy to the neighborhood, advance Singapore’s strategic sustainability efforts, and reinforce Keppel’s position as innovation leader in the real estate market.”

### **Advancing Sustainable Development in Singapore with Innovation in Energy Efficiency**

Keppel is committed to halve its Scope 1 and 2 carbon emissions by 2030 and achieve net zero by 2050. In line with this, it is committed to creating smart and sustainable developments – bearing testament to this, Keppel South Central earned the BCA Green Mark Platinum Super Low Energy Award for its innovative and green features.

The highly efficient design at Keppel South Central includes rooftop-mounted photovoltaics that generate energy to power public space lighting and exterior air circulation fans in the outdoor public spaces. Addressing Singapore’s high reliance on air-conditioning, the building features a distinctive environmental veil that helps shield direct sunlight, while still ensuring maximum daylight, to reduce energy loads.



Swooping outward, the environmental veil transforms into a canopy and creates an open-air plaza accessible from Tanjong Pagar Road where people can enjoy shade and cover in the hot and humid climate. Rising approximately 18 meters from the ground, the canopy extending from the building’s unique architectural form invigorates those under its cover with feelings of being outdoors yet protected from the elements. The surfaces of the environmental veil are designed to capture rainwater for landscape irrigation and other uses on site and to block direct sun while reflecting ambient daylight into the interior, thus enhancing tenant performance, and contributing to a sense of well-being.

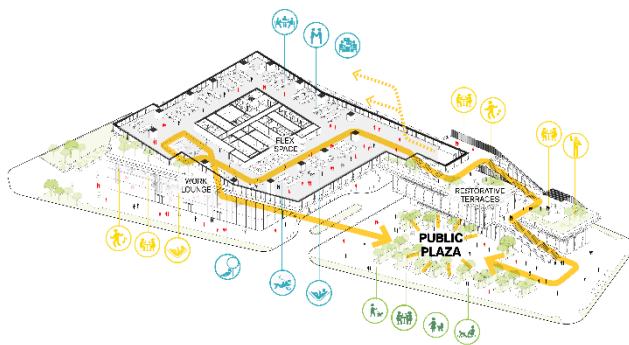
“Keppel South Central is designed to sync building performance with human performance, seamlessly integrating environmental advantages with spaces that make people more innovative, creative, healthy, and committed to a purpose-driven future. Although many buildings incorporate nature, the open and active spaces at Keppel South Central ensure deeper engagement with nature and infuse wellness and higher levels of productivity into daily lives,” said NBBJ Design Principal, Yanko Apostolov, AIA.



## **A Vertical Village Enriching Workdays and Everyday Life**

When completed, the Keppel South Central will serve as a visual landmark for the district's skyline and a central gathering place where tenants and the community can enjoy vibrant amenity spaces that cater to diverse needs throughout the day and evening. Unified through the tower's environmental veil are multiple levels of indoor and outdoor spaces, including two floors of flexible workspaces and shared amenities with various sizes of fitted private office suites, meeting facilities, event spaces, family and pet-friendly spaces, two nature-inspired sky terraces, a gymnasium and an outdoor swimming pool, all designed to promote a balanced lifestyle within a hospitable environment where new ways of working, a focus on health and wellness, and spaces that promote productivity and innovation converge.

"This sustainability-led project reflects our dedication to creating spaces that give employees a holistic work experience and provide services to citizens of the community," added Johnson. "In addition to creating opportunities for office workers to go downstairs for meetings, bookend their workday with a workout or swim, and engage in different activities throughout the day, we've also designed the plaza with flexibility to be programmed for local festivals and holidays and evolve over time to continually serve the community."

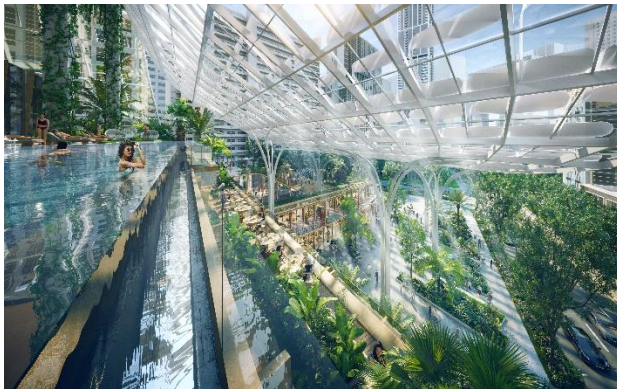


From the canopy-covered plaza, the public can explore a diverse array of amenities accessible from a series of pathways that lead to different experiences, from a lobby programmed with F&B and lounge spaces, to outdoor areas where visitors can eat alfresco. Fostering synergy between people as well as connections to the rest of the city, the design is purposefully pedestrian-friendly. Those walking alongside the building will enjoy a protective cover. The nearby mass transit stop directs pedestrian traffic toward the corner of the building where the veil peels away from the building to offer a gracious welcome and give a glimpse of the activity inside.

Terraces at the tower's lower level are accessible to the public and can be used as rest areas, with seating surrounded by plants creating a tranquil environment and extending the public experience beyond the ground floor. Taking advantage of the views, NBBJ designed a restaurant at the crown of the building, which will be lit at night, thus making the building both a hub for the surrounding neighborhood and a statement on the skyline.

## **Layering Nature into the Experience**

In addition to enabling connections to the surrounding community, Keppel South Central reimagines the office typology through restorative spaces and connection to nature, fresh air, and opportunities for social interaction. In addition to cascading landscaped roof terraces that capture the attention of pedestrians along Tanjong Pagar Road, an exterior sky terrace designed for office tenants features an outdoor zone as a peaceful work environment that is protected and covered but feels open to the elements. The double height space is heavily planted and features plentiful natural light, providing the ideal place to host meetings and generate ideas while in motion, which gives building occupants a significant advantage considering studies have found the human brain is at its most attuned function when walking.



To create a feeling of being in nature and reinforce a sense of place, the tower's outdoor hybrid workplaces feature warm, natural materials and draw inspiration from the historic shophouses in the area. NBBJ leveraged a high level of detail to relate the design back to the heritage of the neighborhood. Elements that appear handcrafted create a work environment where employees will be more comfortable, inspired, and productive.

## **About NBBJ**

NBBJ is an ideas-driven design firm with an empathetic process. With 80 years of experience, its work is rooted in research, making, and the belief that all voices should be heard. NBBJ's global network of more than 800 researchers, strategists, nurses, architects, planners and interior designers work in 12 creative capitals around the world to help clients pursue health, community, and a zero-carbon future. NBBJ is the recipient of more than 1,000 prestigious awards from leading design and business organizations, such as the American Institute of Architects, the Urban Land Institute, Fast Company and MIPIM. The firm is also a Carbon Neutral certified company through Nature Capital Partners' Carbon Neutral Protocol, a signatory of the AIA 2030 Challenge and the Amazon Climate Pledge and a participant of the 1.5C COP26 Communique. For more information, visit [www.nbbj.com](http://www.nbbj.com) or [www.nbbj.cn](http://www.nbbj.cn); or follow NBBJ on social media channels on [Facebook](#) and [Weibo](#).

## Andrew Chew

Schooled in banking, finance, economics, law and marketing, Dr. Andrew Dekguang Jhou Chew ventured into entrepreneurship about 19 years ago from banking with the intent of contributing to Mother Nature rather than taking from her. His latest endeavour as an eco-preneur is to find a suitable replacement to conventional plywood used widely around the world.

Hence, the birth of Lignoson Singapore Pte Ltd, for which Dr. Andrew is the Founder and CEO, successfully 'making wood from no wood.'



**Tell us briefly about your background and how this innovation and idea to create a plywood replacement started from?**

I was a banker for more than a decade and then an entrepreneur for the last 19 years. While my academic background is in economics, marketing, banking, finance and law, I have always had a curious nature - dabbling into technology, innovations and inventions. As an entrepreneur, I became known as the new breed of 'eco-preneurs', as I was previously involved in renewable wind energy business, life-sciences and health sciences. When I was renovating my home in 2018, I realized that my contractor was using a lot of plywood for the carpentry works. I was told that plywood was the preferred material because of its superior qualities and longevity compared to MDF and particle board. But it is the most expensive amongst all the boards. I asked my interior designer if the plywood was 'green' since it was termed as organic, but she couldn't respond properly.

I decided to investigate into the matter and realized that plywood is one of the major contributors to CO2 in the world and a major reason for deforestation. The world consumes about 180 million cubic metres of plywood which produces more than 3.3 billion tons of CO2.

I decided immediately to embark on the journey to find and develop a replacement for

conventional plywood and not to log or sacrifice any more trees to make 'plywood'.

**From day one Lignoson has held nature at its heart, what is the company's view on sustainability and climate change on the world at large?**

The name Lignoson comes from 'ligno' the first 5 letters of lignocellulosic fibre waste, 's' stands for sustainability, 'o' symbolises circularity and 'n' stands for nature protect. Lignoson was born from the passion to heal and protect Mother Earth, nature is our heart. I do not believe in climate change; the terminology is too weak and does not invoke sufficient action nor credible traction. I believe the world is experiencing a climate crisis, unfortunately we have produced more CO2 in the past 25 years post Kyoto Protocol Agreement in 1997, compared to the 25 years before that. Every country in the world is experiencing extreme weather conditions, it is costing billions in damages to infrastructure and economies. Sadly, lives are lost as well and this is not tenable. We need to make credible steps forward and we need to do it now, without further delay.

I believe our understanding of the concept of circularity today is misaligned. Today, circularity means we first get natural resources to make the initial product or material, then after we have consumed or used it, it is



renewed or regenerated as many times as possible at the same value or lower value through time, thereby extending the period before we need to go back to take from natural resources again. While I agree with the second part of the equation, I disagree with the first. Respectfully, we should not even touch natural resources. Globally, we produce more than 2 billion tons of waste every year, the potential to use this as valuable resources to recycle, to renew and to regenerate is huge. We don't need to rely on natural resources.

Lignoson is a true example of circularity. We use upstream waste (agri-fibre waste that has no competitive use) and produce a direct replacement for conventional plywood, negating the need to go to Mother Nature for natural resources. Lignosonia boards can be recycled and regenerated numerous times and can also go down the value chain as feedstock for MDF and particle boards.

In other words, we are a complete and pure testimony for circularity, from waste to high value-added product to waste and regenerate to product again and so on, a perfect closed loop circular 'green-ocean' solution.



What are the critical social environmental issues Lignoson is trying to solve?

The three most abundant and burgeoning lignocellulosic fibre waste is rice, wheat straw waste and palm biomass waste. Currently, with little competitive use, most of it is burnt to fertilize the land. Rice and wheat are grown in more than 120 countries, palm oil is grown in 42 countries, so this lignocellulosic fibre waste is practically everywhere on our planet. Most of this fibre waste is concentrated in developing countries, where poverty is rampant and the people have low quality of life, such as India, Indonesia and South America. However, these countries have untapped 'gold', that is, the rice and wheat straw waste that can be used to produce our Lignosonia boards. We can elevate the farmer livelihood, build low-cost housing for the poor and still operate a highly profitable business. More importantly, we save forests from being logged, we preserve the eco-system, the biodiversity, and the lives in the forests. Scientists have also come to realize that forests are responsible for regulating the water and carbon cycle in our atmosphere which gives the moderate and predictable weather.



How well does this sit with the concepts that government endorses through the Singapore Green Plan 2030?



The Singapore Green Plan 2030 aims to reduce carbon emissions and increase the gross green floor area of Singapore buildings. The manufacturing process of Lignosonia boards is a creator of CO2 credits. If property developers use Lignosonia boards in their interior and exterior furnishings and furniture, it will automatically increase the gross green floor area. We hope to also be a motivating force to other entrepreneurs who wish to contribute to the Singapore Green Plan 2030. Graciously speaking, the earlier we start using Lignosonia boards in the different and many applications in the construction of our buildings, the more credibly we will reach the goals set in Singapore Green Plan 2030.



**What's the next step for the company? And what opportunities are you looking to create to contribute to the economy?**

We have completed our proof of concept, proof of product, we are now at the door of commercialization. We would like to transfer our technology to countries where rice and wheat straw waste and palm biomass fibre waste are plentiful, so we can produce Lignosonia boards to replace existing demand for conventional plywood in these countries. If we execute on this basis, we will be well on our way to clawing back 95% or 3 billion tons

of CO2 as CO2 credits apart from saving our precious forests. We are a solution that is executable today with real and impactful multiple collateral benefits to many people and to many tomorrows.

Our Deputy Prime Minister, Lawrence Wong mentioned in a recent seating of parliament that the future of Singapore is Singapore 4.0. Our assets are our people, and our future assets will be technology and innovations that can be exported to developed countries. So far, we have been highly successful in the past 5 decades learning, adapting, adopting, and evolving the technologies and innovations from developed countries to suit Singapore. In turn, we have successfully exported the success to our neighbouring countries.

Lignoson and Lignosonia is a great example of Singapore 4.0, where Singapore can potentially export its successful technology to the developed countries.





# "COME JOIN ME AT THE SUSTAINABILITY IN BUILT ENVIRONMENT SEMINAR ON 16 SEPTEMBER 2023".

**Dr Sussie Ketit**

President, Singapore Institute of Building Limited



## TOPIC SYNOPSIS

**Topic : Driving Innovation through Impactful Solutions. Discover the connection between sustainability and innovation.**

**Synopsis : Sustainability has become a top priority among decision-makers in our current global economic, political and business environment.**

**This session of the seminar has been designed to help professionals apply innovative business case for sustainable solutions and what the future of business looks like with sustainability in mind.**

**Participants will also learn how to manage and lead a sustainable business by incorporating circular economy principles strategies to support sustainable growth.**

*This seminar is organised by the Singapore Institute of Building Limited*



Singapore Institute  
of Building Limited

[www.sibl.com.sg](http://www.sibl.com.sg)

Follow us on:



Facebook



LinkedIn

**Venue : National University of Singapore Society Kent Ridge Guild House, Right Chamber Room  
9 Kent Ridge Drive. Singapore 119241**

\*\*\*\*\*  
**Speakers for the seminar**

**Mr Jonathan Lim - Assistant Manager, Pan United Corporation.**

**Topic : Reducing Embodied Carbon using Low-Carbon Concrete Technologies**

**Dr Parvathy Subhadra - Managing Director, Green in Future Pte Ltd/ Fellow, Singapore Institute of Building Limited**

**Topic : Net zero journey and carbon footprint**

**Mr Gavin Chan - Head (Sustainable Office), CPG Corporation.**

**Topic : Built Environment and Decarbonization - A lifecycle approach.**

\*\*\*\*\*  
**Seminar fee :**  
**SIBL/BEMA/CIJC members \$100**  
**Non members \$150**

**Scan the QR code to register:**





## The Innovators of Agriculture: Lessons from Japan's Thriving Industry

The Japanese agriculture industry has long been admired for its resilience, productivity, and ability to overcome daunting challenges. Despite a greying agricultural workforce and the fact that only [approximately 20 percent of the land area in the island nation is suitable for cultivation](#), according to a report by Statista, Japan has emerged as a global leader in agricultural innovation. Through a combination of forward-thinking strategies, advanced technologies, and a deep respect for tradition, the rest of the world can draw valuable lessons from Japan's agribusinesses.



One of the key factors behind Japan's success in agriculture is its unwavering commitment to innovation. The country has been a pioneer in implementing advanced cultivation techniques, utilising precision farming methods, and leveraging automated robotics systems and agricultural drones to overcome the challenges of limited resources. As such, in anticipation of the [forecasted water shortages by 2030](#), Japan has actively been [investing in IoT and AI solutions](#) to have predictive analytics algorithms that can optimise resource allocation.

These efforts have allowed Japan to not only sustain its agricultural sector but also thrive in a highly competitive global market. In 2022, the value of agricultural commodity exports from [Japan witnessed significant growth](#) from approximately JP¥313.6 billion in 2013 to around JP¥886.16 billion, based on a report by Statista. This major pivot can be traced back to Japan's adoption of automated machinery, remote sensing, and GPS-guided systems that allow farmers to achieve higher crop yields, reduce resource waste, and optimise land usage.

A realisation of smart and digital agriculture developed in Japan can be seen on a tomato farm in Shizuoka prefecture. Aside from a climate-controlled greenhouse that can produce a consistent

harvest year-round, robotic sorting machines equipped with image recognition software, which can track damage and the size of each tomato, are also used. This, along with multiple other commitments, has paved the way for ground-breaking advancements in agriculture, ranging from robotics and automation to sustainable farming methods.

In this context, industry events such as [AGRI WEEK TOKYO](#), [GARDEX](#), and [TOOL JAPAN](#) continue to play a crucial role in boosting the overall agricultural industry in Japan. These annual exhibitions provide a platform for manufacturers, researchers, government leaders, and technology providers to come together, exchange ideas, and showcase the latest advancements in the field.

Through AGRI WEEK TOKYO and its concurrent shows, Japan continues to demonstrate its commitment to driving the growth and development of the agriculture sector. The lessons and practises learned from Japan can inspire and guide other nations in their pursuit of sustainable and efficient agricultural practices.

To participate as an exhibitor or visitor in the upcoming AGRI WEEK TOKYO and its associated shows, please visit the official website at [www.agriexpo-week.jp](http://www.agriexpo-week.jp). Mark your calendars and join **AGRI WEEK TOKYO, GARDEX, and TOOL JAPAN on 11-13 October 2023 at Makuhari Messe, Japan.**

#### **About RX (Reed Exhibitions)**

RX is in the business of building businesses for individuals, communities, and organisations. We elevate the power of face-to-face events by combining data and digital products to help customers learn about markets, source products and complete transactions at approximately 400 events in 22 countries across 42 industry sectors. RX is passionate about making a positive impact on society and is fully committed to creating an inclusive work environment for all our people. RX is part of RELX, a global provider of information-based analytics and decision tools for professional and business customers. [www.rxglobal.com](http://www.rxglobal.com)

#### **About RX Japan Ltd.**

RX Japan organises 96 exhibitions, composed of 363 sub-exhibitions, annually at large exhibition halls such as Tokyo Big Sight, Makuhari Messe, and Intext Osaka across a wide variety of 38 fields including jewellery, fashion, gift items, electronics, energy, IT, cosmetics, and medical. Visit the [RX\\_Japan](#) website for more details.





# ENERGIZE THE FUTURE

**17 – 19.04.2024 | SECC, HCMC, VIETNAM**

**Co-Organize with**



**SMART CITY  
ASIA**



**SMART TECH  
ASIA**



**LEDTEC  
ASIA**



## The Nature Conservancy takes root in Singapore to advance a nature-positive future

*Accelerating and scaling up impact across the Asia Pacific region with innovative, science-based conservation solutions*

Singapore, 18 July 2023 - The Nature Conservancy (TNC), a global environmental nonprofit dedicated to creating a world where people and nature can thrive, announced today its official expansion into Singapore. Supported by the Singapore Economic Development Board (EDB), its newly established office in Singapore will serve as a strategic global centre for partnerships, innovation, and scientific research, focused on addressing the interconnected crises of climate change and biodiversity loss.

In line with this commitment, TNC is actively expanding its team in Singapore, with plans to hire at least 20 new staff members over the next five years. This investment in Singapore-based talent demonstrates TNC's dedication to building a strong foundation and expertise in Singapore, to deliver tangible, lasting results for both people and nature.

This expansion also aligns with Singapore's ambitious Singapore Green Plan (SGP) 2030, which seeks to position Singapore as a leading centre for green finance and services to facilitate Asia's transition to a low-carbon and sustainable future, and establish Singapore as a carbon services hub in Asia. By expanding into Singapore, TNC is helping to put action behind Singapore's green ambitions by drawing upon its extensive international network and scientific expertise. TNC will focus on strategic areas that complement and accelerate Singapore's sustainability agenda, while also advancing its own 2030 goals.

These include:

- **Driving sustainable solutions:** TNC will support the growth of a high-integrity market for Nature-based Solutions (NbS) carbon credits, benefiting people, nature, and the climate. Through the Southeast Asia Climate and Nature-based Solutions Coalition (SCeNe Coalition), TNC and partner organisations are accelerating the adoption of triple-benefit NbS in the region.
- **Bridging climate and conservation funding:** TNC will bridge the gap between the need for increased climate and conservation funding in the region and the growing interest from private sector investors. Partnering with NatureVest, its in-house impact investment team, TNC aims to develop impact-investable products and raise investment capital for initiatives that deliver positive conservation outcomes.
- **Transforming business practices:** By partnering with trading companies and the finance sector, TNC will help address commodity-driven land conversion such as the clearing of forests, peatlands, mangroves and other natural areas for agriculture, and help companies implement sustainability programmes and commitments that deliver better outcomes for people and nature.
- **Collaborating with leading academic and research institutions:** With Singapore's status as a hub for world-class academic and research institutions, TNC will partner with these institutions to deepen the understanding of nature's role in addressing climate change. This partnership will aid in the acceleration of the deployment of NbS across the region.

"We are excited to build on The Nature Conservancy's seven decades of experience with our expansion into Singapore, a crucial piece of the ecological puzzle in Asia-Pacific," said Jennifer Morris, Chief Executive Officer of The Nature Conservancy. "We understand the pressing challenges faced by this rapidly growing region, and we look forward to our work with partners in Singapore to further strengthen the deployment of nature-based solutions that deliver triple benefits for climate, nature and people. Together we can leverage the country's incredible position as a leading hub for green finance, climate action and ecological stewardship, paving the way towards a sustainable future in the Asia Pacific region and beyond."



“With increasing urgency on climate action, Singapore hopes to play a role in accelerating the low carbon transition in Southeast Asia, leveraging our strengths in innovation, financing and professional services. As we grow as a hub for the region in carbon management, we welcome the addition of TNC, bringing with it global conservation experience and research and project development capabilities,” said Damian Chan, Executive Vice President, Singapore Economic Development Board. “We look forward to TNC’s contributions in driving sustainable solutions and creating new partnerships, both here and in the region.”

The launch of TNC's office in Singapore is timely, not only for Singapore but also for the Asia Pacific (APAC) region as a whole. With over 4.3 billion people and diverse landscapes, APAC faces increasing pressures from urbanisation, consumption, and resource demands. TNC's presence in Singapore will play a crucial role in addressing these challenges to safeguard the region's unique ecosystems and mitigate climate change.

To learn more about TNC, please download TNC’s latest global annual report and Asia Pacific Impact Report. To get involved, please visit <https://www.nature.org/singapore>

### **About The Nature Conservancy**

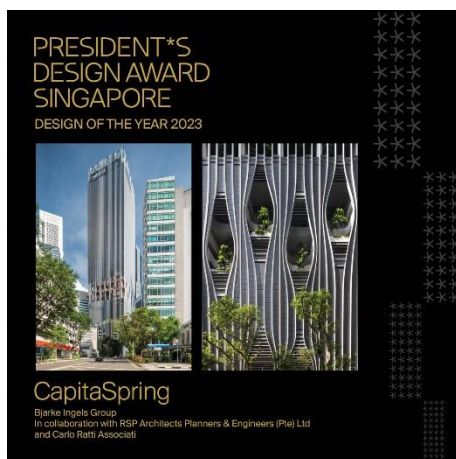
The Nature Conservancy is a global conservation organisation dedicated to conserving the lands and waters on which all life depends. Guided by science, we create innovative, on-the-ground solutions to our world’s toughest challenges so that nature and people can thrive together. We are tackling climate change, conserving lands, waters and oceans at an unprecedented scale, providing food and water sustainably and helping make cities more sustainable. Working in 79 countries and territories, we use a collaborative approach that engages local communities, governments, the private sector, and other partners. TNC has been in Asia Pacific for almost 30 years with projects in Australia, China, Hong Kong, Indonesia, Mongolia, Myanmar, New Zealand, and the Pacific Islands.

To learn more, visit [www.nature.org](http://www.nature.org) or follow [@nature\\_org](https://twitter.com/nature_org) on Twitter.

## RSP Architects Receives the Prestigious President's Design Award for the Sixth Time, Capping A Year of Global Accolades with its Innovative Sustainable Projects

*Singapore, 21 July 2023* – RSP Architects Planners & Engineers (Pte) Ltd (RSP Architects), a leading home-grown global company, headquartered in Singapore with 16 offices in 6 countries, has been awarded the prestigious President's Design Award (P\*DA) for the Design of the Year 2023 together with Bjarke Ingels Group and Carlo Ratti Associati, for their groundbreaking project, CapitaSpring. Since its founding nearly 70 years ago, RSP Architects has been dedicated to executing designs that are creative and original in their concept, while enriching and transforming people's lives.

This is the sixth time RSP Architects has received the P\*DA, having been awarded in 2020 for Jewel Changi Airport; 2018 for Changi Airport Terminal 4; 2010 for The Pinnacle@Duxton; 2009 for Henderson Waves; and 2008 for LASALLE College of the Arts.



CapitaSpring is a mixed development building located in the heart of Raffles Place. The vertical green city features an iconic facade that harnesses the latest workplace and lifestyle innovations, with social and activity spaces interspersed among lush greenery over four stories.

The P\*DA is the highest accolade in Singapore's design industry – it recognises designers and design projects across various disciplines that have positively impacted the lives of Singaporeans and the global community through design excellence. Receiving the award for the sixth time is a testament to RSP Architects' exceptional talent, expertise, and unwavering dedication to blend aesthetics, functionality, and sustainability into a harmonious whole, making it one of the most awarded architectural firms in Singapore.

"We are immensely honoured to receive the P\*DA for CapitaSpring. This recognition is the fruit of our talented team's collaborative efforts and our unwavering commitment to push the boundaries of design excellence. CapitaSpring represents our vision for a sustainable and vibrant urban environment, and we are thrilled to see it being celebrated on such a grand scale," said Mr. Seah Chee Kien, Senior Managing Director of RSP Singapore.



### **Awards across the globe in 2023**

Since the start of the year, RSP Architects' CapitaSpring has received many other accolades – Council on Tall Buildings and Urban Habitat (CTBUH) has awarded CapitaSpring with four separate honours, namely Best Tall Building 200-299 meters, Best Tall Building Asia, Systems Award (Facade System), and Systems Award (MEP System).

In addition to this award for CapitaSpring, RSP Architects has also received the BCI Asia Awards Top 10 Architects Awards 2023 – its 18th. This year, the award was a recognition of RSP Architects' contribution to the facelift of Changi Airport Terminal 2. The BCIAA Top Ten Architects Awards further solidifies RSP Architects' position as an industry pioneer and leader, setting new benchmarks for architectural excellence year after year.

### ***Middle East***

RSP Architects has also been recognised for its revolutionary designs globally. During the Design Middle East KSA Awards 2023 earlier this year, the organisation was named Architecture Firm of the Year. Additionally, RSP Architects' very own Michael Magill was named Architect of the Year. RSP Architects was also awarded Best Future Project for Ellington Beach House at the Architecture Leaders Awards 2023.

### ***China***

RSP Architects has also made a splash in China – the architecture firm clinched the Silver Award at the 2023 IAI Creative Design Festival in Commercial Space for HOPS ON. The myriad award is testament of RSP Architects' stature as a global powerhouse, a transformative force that shapes the future of the world.

"At RSP Architects, we believe that architecture is more than just structures; it is the art of shaping experiences. As we move towards a sustainable future, we believe in mindfully incorporating innovation into designs for our clients to create spaces that are not only aesthetically pleasing but also functional, efficient, and adaptable," said Mr Beh Swee Chiew, Managing Director of RSP Singapore.

### **About RSP Architects Planners & Engineers (Pte) Ltd**

RSP Architects Planners & Engineers (Pte) Ltd (RSP Architects) is a global multidisciplinary architectural and engineering design group head with headquarters in Singapore. For more than 60 years, they are focused on designs that are creative and original in their concept but above all, enrich and transform people's lives. RSP's future-forward view of purpose and design is fused with their strong technical expertise and this is made possible by their global team of 1,200 experts and professionals across 15 studios in six countries. With more than 2,500 international projects, RSP's portfolio spans across master planning, mixed use, retail, office, education, residential, civic, hospitality, industrial, transport and healthcare sectors.



Green In Future is a novel venture of like-minded professionals with achieving a sustainable future as the target. Among the many services provided, the diffusion of technology to as many as possible and as far as possible, educating and generating awareness by being the link between the producer and the user, giving adequate training to the interested to adopt an innovation in Urban Landscaping, Urban farming, Education, Environmental issues and Health etc. are in the forefront.

#### OUR SERVICES:

- E-Newsletter
- Events (Seminar & Conferences)
- Training Programs & Workshops
- Research & Demonstrations
- Project Consultancy

For further details, please contact:

**GREEN IN FUTURE PTE LTD**, Reg No. 201627389Z

14, Robinson Road, 08-01A, Far East Building, Singapore-45.

Tel: +65-9737 9356 ▪ Email: [paru@greeninfuture.com](mailto:paru@greeninfuture.com)

[www.greeninfuture.com](http://www.greeninfuture.com)